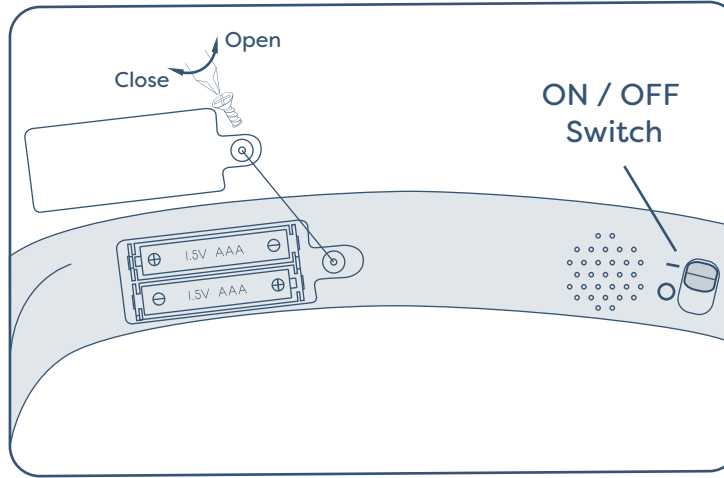




2+

Shop & Glow Toy Cart™

Musical Shopping Cart



REPLACING BATTERIES

2 X AAA (1.5V) BATTERIES INCLUDED

- Do not mix old and new batteries.
- Do not mix alkaline, standard (carbon-zinc), or rechargeable batteries.
- Dead batteries? Check out earth911.com to quickly find the recycling center nearest you.

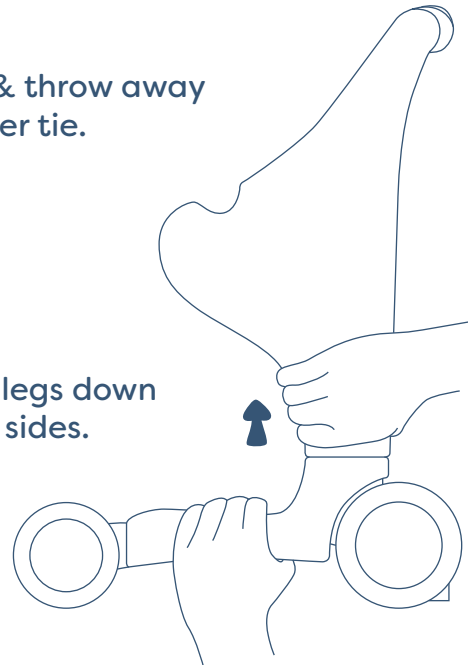
This device complies with Part 15 of the FCC Rules. Operation is subject to the following two conditions: (1) this device may not cause harmful interference, and (2) this device must accept any interference received, including interference that may cause undesired operation. Caution: changes or modifications not expressly approved by the party responsible for compliance could void the user's authority to operate the equipment. NOTE: This equipment has been tested and found to comply with the limits for a Class B digital device, pursuant to Part 15 of the FCC Rules. These limits are designed to provide reasonable protection against harmful interference in a residential installation. This equipment generates, uses and can radiate radio frequency energy and, if not installed and used in accordance with the instructions, may cause harmful interference to radio communications. However, there is no guarantee that interference will not occur in a particular installation. If this equipment does cause harmful interference to radio or television reception, which can be determined by turning the equipment off and on, the user is encouraged to try to correct the interference by one or more of the following measures:

- Reorient or relocate the receiving antenna.
- Increase the separation between the equipment and receiver.
- Connect the equipment into an outlet on a circuit different from that to which the receiver is connected.
- Consult the dealer or an experienced radio/TV technician for help.



Step 1

Cut off & throw away the paper tie.



Step 2

Pull the legs down on both sides.

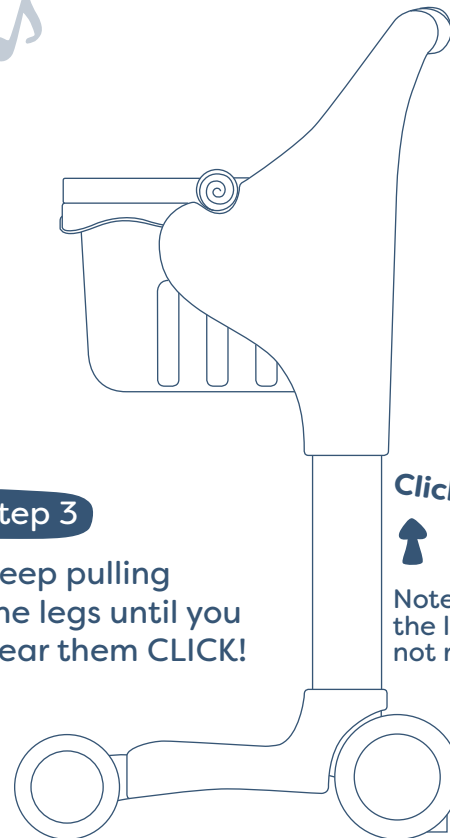
Step 3

Keep pulling the legs until you hear them **CLICK!**

Click!

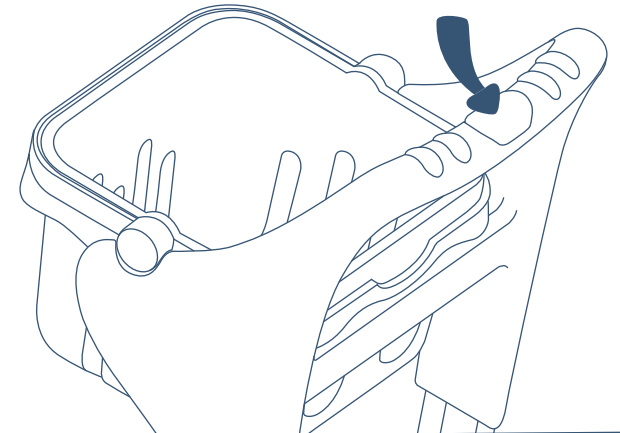


Note: the legs are not retractable!



FUNCTION

Press for music & lights!



© 2020 Maison Battat Inc.
 B. toys and Shop & Glow Toy Cart are trademarks of Maison Battat Inc.
 Manufactured for Maison Battat Inc. 8440 Darnley Road, Montreal, P.Q. H4T 1M4
 Designed by Maison Battat Inc.
 Consumer Information Line: 1-866-665-5524. Visit us at www.mybtoys.com
 Please remove all packaging materials before giving to children.

BX1820