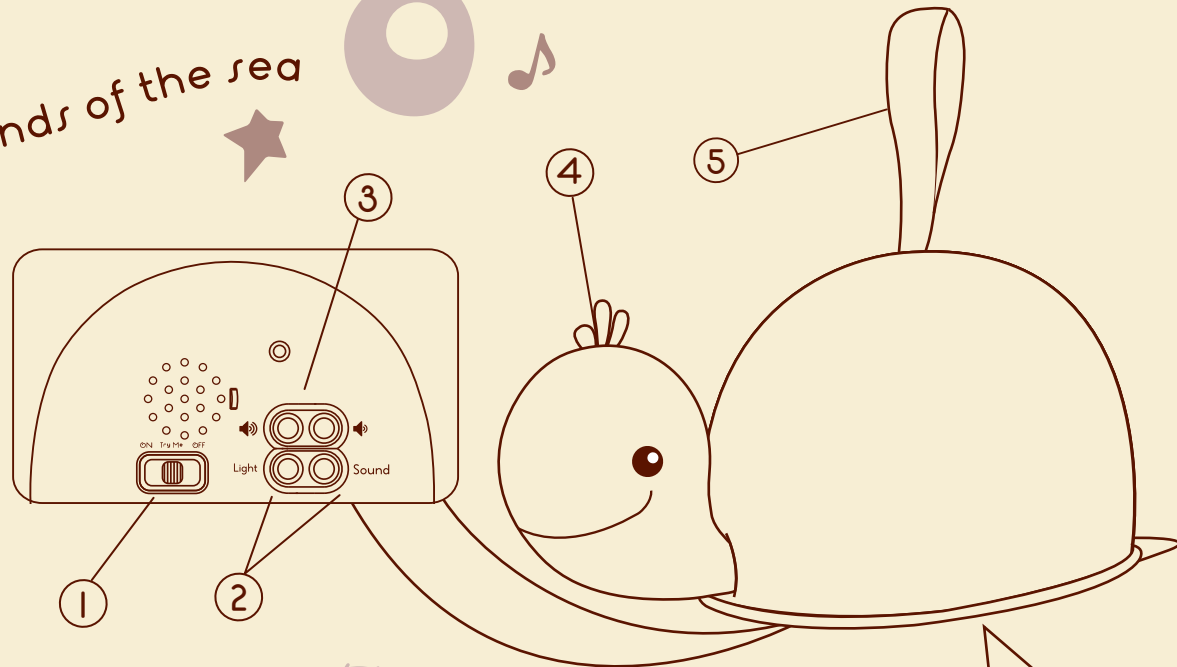


Drift away
to the sounds of the sea

B baby

GLOW ZZZS™
Shellé™

6 MONTHS +

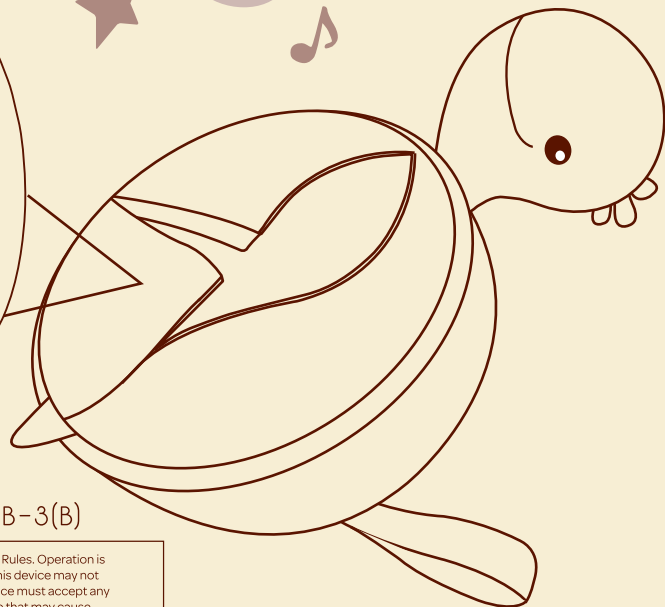
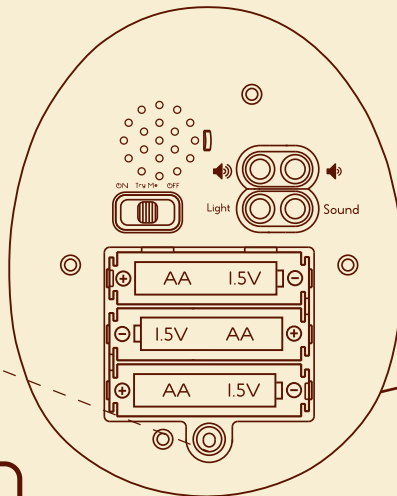
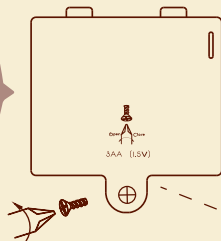


Drift away into the deep blue zzzs with
a huggable, glowable, soothable pal.

FUNCTIONS

1. Slide switch to “ON” and **Shellé™** will play for 20 minutes.
2. The choice is now yours: a soothing glow or a comforting sound:
SOUND: Press the “Sound” button to wander through 4 calming sounds or to turn the sound off.
LIGHT: Press the “Light” button and see **Shellé™** change between 3 soft-glowing colors. Press again to turn the lights off.
3. Adjust the volume, according to the desired ambiance.
4. Gently press the turtle’s head to change the sound.
5. Always keep **Shellé™** close by. Do not hang this adorable turtle over a crib or a play mat.

WARNING:
Do not hang this turtle over
a crib or a play mat.



Follow up on everything B.

@mybtoys

No dilly-dallying here at B.

Visit mybtoys.com, where you shall discover a playful, fast-paced universe. If you have any questions or comments, crawl us (toll free).

1-866-665-5524

REPLACING BATTERIES

3 AA (1.5V) BATTERIES INCLUDED

- Do not mix old and new batteries.
- Do not mix alkaline, standard (carbon-zinc), or rechargeable batteries.
- Dead batteries? Check out earth911.com to quickly find the recycling center nearest you.

CAN ICES-3 (B)/NMB-3(B)

This device complies with Part 15 of the FCC Rules. Operation is subject to the following two conditions: (1) this device may not cause harmful interference, and (2) this device must accept any interference received, including interference that may cause undesired operation.

Caution: changes or modifications not expressly approved by the party responsible for compliance could void the user's authority to operate the equipment.

NOTE: This equipment has been tested and found to comply with the limits for a Class B digital device, pursuant to Part 15 of the FCC Rules. These limits are designed to provide reasonable protection against harmful interference in a residential installation. This equipment generates, uses and can radiate radio frequency energy and, if not installed and used in accordance with the instructions, may cause harmful interference to radio communications. However, there is no guarantee that interference will not occur in a particular installation. If this equipment does cause harmful interference to radio or television reception, which can be determined by turning the equipment off and on, the user is encouraged to try to correct the interference by one or more of the following measures:

- Reorient or relocate the receiving antenna.
- Increase the separation between the equipment and receiver.
- Connect the equipment into an outlet on a circuit different from that to which the receiver is connected.
- Consult the dealer or an experienced radio/TV technician for help.



100% RECYCLED
WOOD-FREE PAPER
PRINTED WITH
SOY-BASED INKS

© 2018 Maison Battat Inc.
Baby B. and Glow Zzzs and Shellé and
Just B. Just You. B. You are trademarks
of Maison Battat Inc.

Manufactured for
Maison Battat Inc.
8440 Darnley Road,
Montreal, P.Q. H4T 1M4
Designed by Maison Battat Inc.

Consumer Information Line:
1-866-665-5524

BX1654

Cleaning instructions: Surface clean only and let it dry naturally. Never immerse the whale in water.